

Ashley Oaks

Steeped in history, Fort Mitchell, Kentucky was the site of one of seven Civil War fortifications built for the defense of Cincinnati. Today, the wide streets, large trees, and beautiful homes remain a favorite for families of all ages. The award-winning Beechwood Independent School, along with Blessed Sacrament School, further add to young families wanting to continue the tradition of raising their sons and daughters in a neighborhood where children still walk and ride their bikes to school and the charming downtown area.

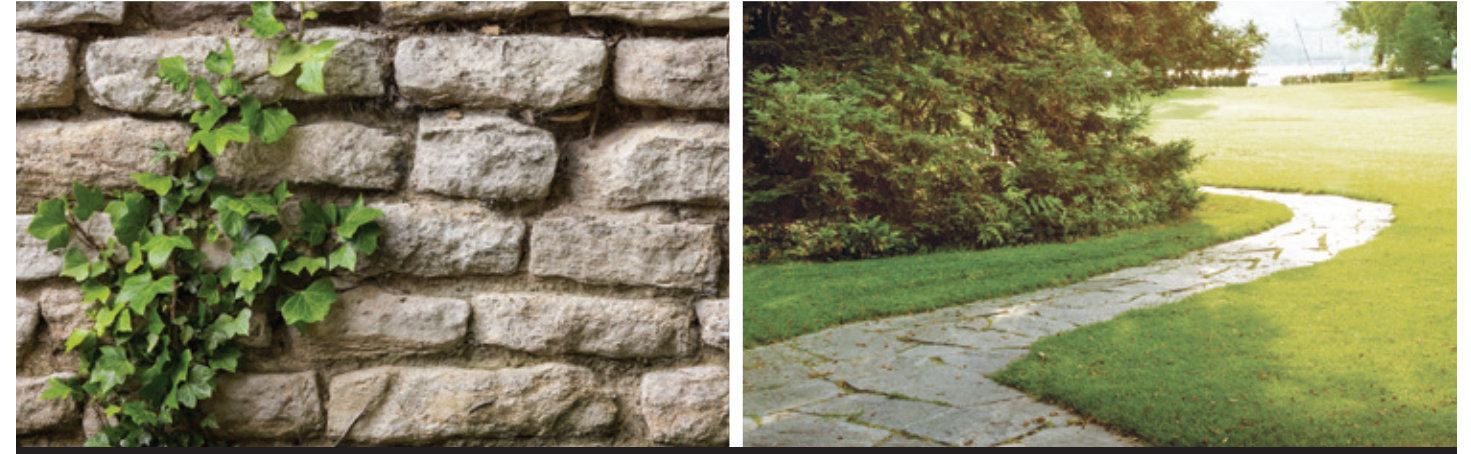
Ashley Oaks, located on Floral Avenue, is located in the heart of it all... and provides the best of both worlds — a new home in an established neighborhood. Just minutes from Interstate 75, downtown Cincinnati, and the Greater Cincinnati International Airport, this beautiful new community has it all. Visit or call today!



ASHLEY  
BUILDERS GROUP

Ashley Oaks

THE KEENELAND



NEW CONSTRUCTION IN HISTORIC FORT MITCHELL, KENTUCKY



ASHLEY  
BUILDERS GROUP

Contact Jason Yeager  
859.393.1460

Ashley Builders Group – Custom Homes  
3005 Dixie Highway  
Edgewood, KY 41017  
For additional information and to  
tour other Ashley floor plans,  
please visit our website  
[www.ashleybuilders.com](http://www.ashleybuilders.com)



859.341.0050



# THE KEENELAND



Contact Jason Yeager  
859.393.1460

# FLOOR PLAN

The Keeneland plan is large and lovely. The gracious foyer with its large coat closet leads to an oversized, open great room, dining area and fabulous kitchen. The magnificent island is perfect for family and friends to gather as the household chef prepares gourmet meals. The kitchen also features a large walk-in pantry. This level also offers a formal dining room, powder room and large mud room with closet and seating. The second level features three nice bedrooms, one of them with an en-suite bath, a hall bath, and a lovely master suite with a double vanity, significant shower, and a large walk-in closet. The laundry room is on this level for added convenience. The lower level offers the option of finishing additional space.

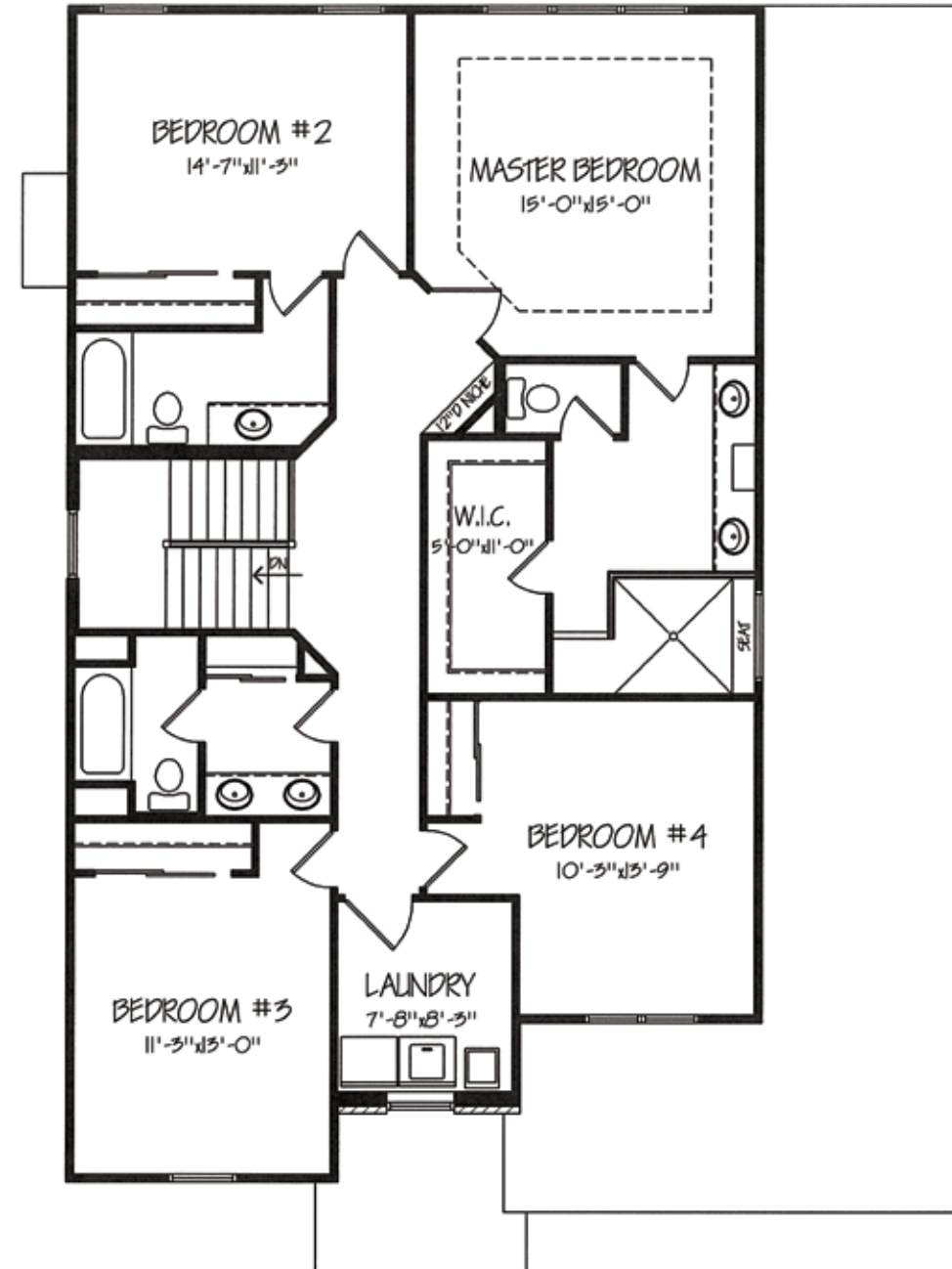
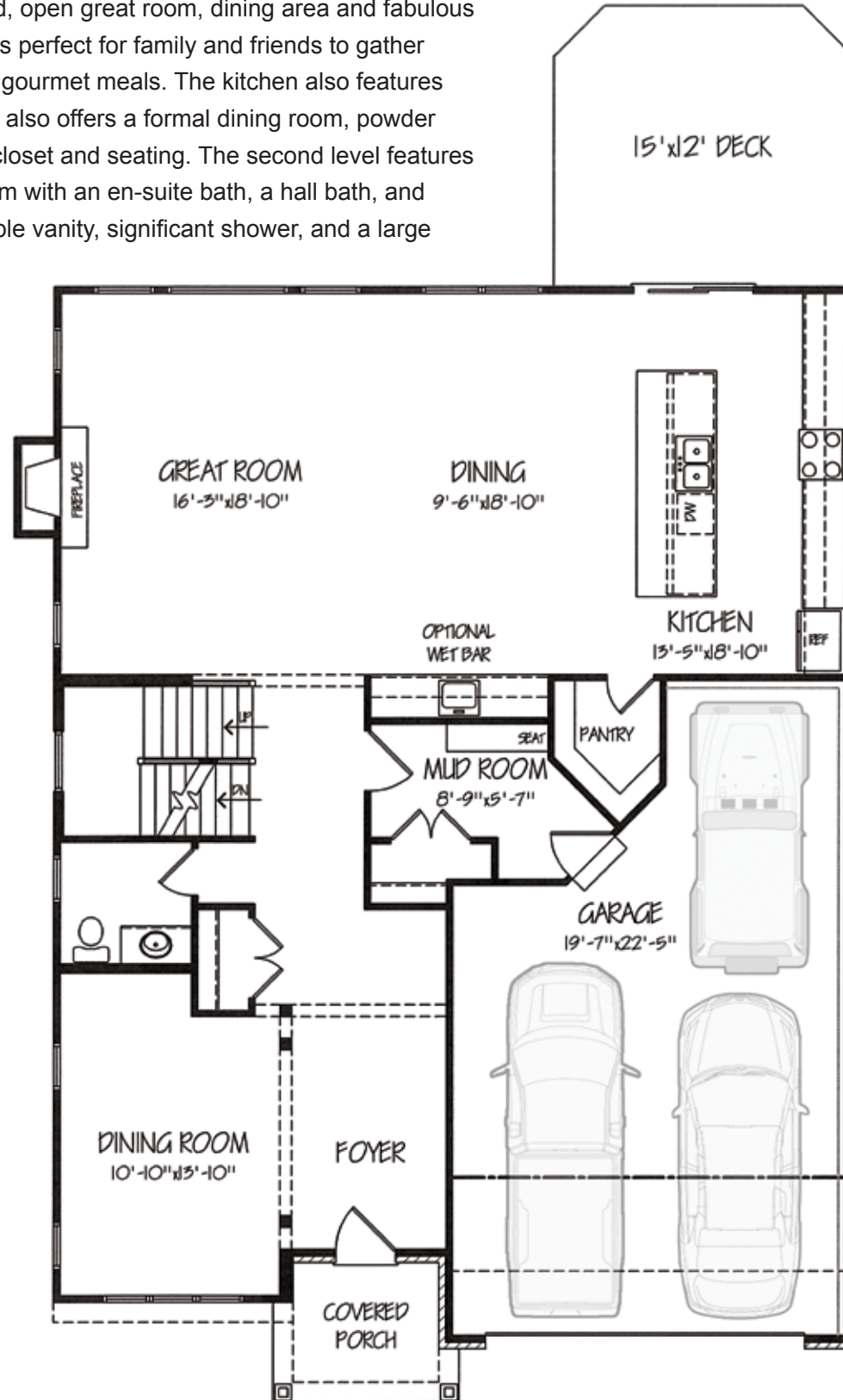
**859.341.0050**

4 Bedrooms • 3 1/2 Baths

2,983 Square Feet

First Floor ..... 1,486 sf  
Second Floor ..... 1,497 sf

This drawing is for illustration only. The builder reserves the right to revise designs and specifications.



FIRST FLOOR

SECOND FLOOR