

Ashley Oaks

Steeped in history, Fort Mitchell, Kentucky was the site of one of seven Civil War fortifications built for the defense of Cincinnati. Today, the wide streets, large trees, and beautiful homes remain a favorite for families of all ages. The award-winning Beechwood Independent School, along with Blessed Sacrament School, further add to young families wanting to continue the tradition of raising their sons and daughters in a neighborhood where children still walk and ride their bikes to school and the charming downtown area.

Ashley Oaks, located on Floral Avenue, is located in the heart of it all... and provides the best of both worlds — a new home in an established neighborhood. Just minutes from Interstate 75, downtown Cincinnati, and the Greater Cincinnati International Airport, this beautiful new community has it all. Visit or call today!

ASHLEY  
BUILDERS GROUP

Ashley Oaks

THE SARATOGA



This drawing is for illustration only. The builder reserves the right to revise designs and specifications.



Directions to Ashley Oaks:  
Dixie Highway to Highland Avenue  
to Floral Avenue

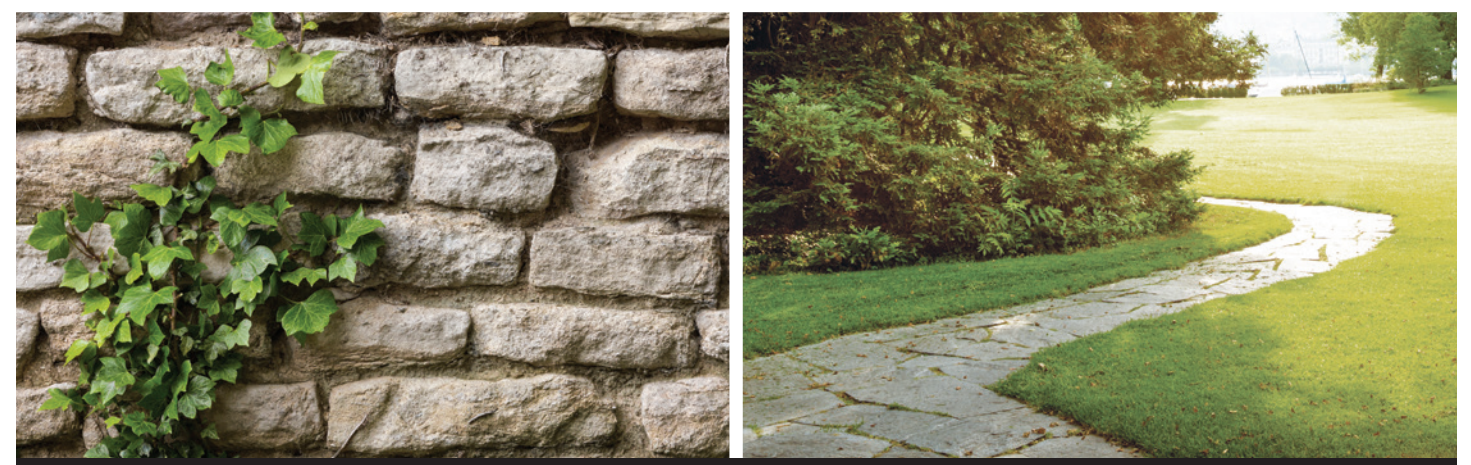


Contact Jason Yeager  
859.393.1460

Ashley Builders Group – Custom Homes  
3005 Dixie Highway  
Edgewood, KY 41017  
For additional information and to  
tour other Ashley floor plans,  
please visit our website  
[www.ashleybuilders.com](http://www.ashleybuilders.com)



859.341.0050



NEW CONSTRUCTION IN HISTORIC FORT MITCHELL, KENTUCKY



# THE SARATOGA



Contact Jason Yeager  
859.393.1460

# FLOOR PLAN

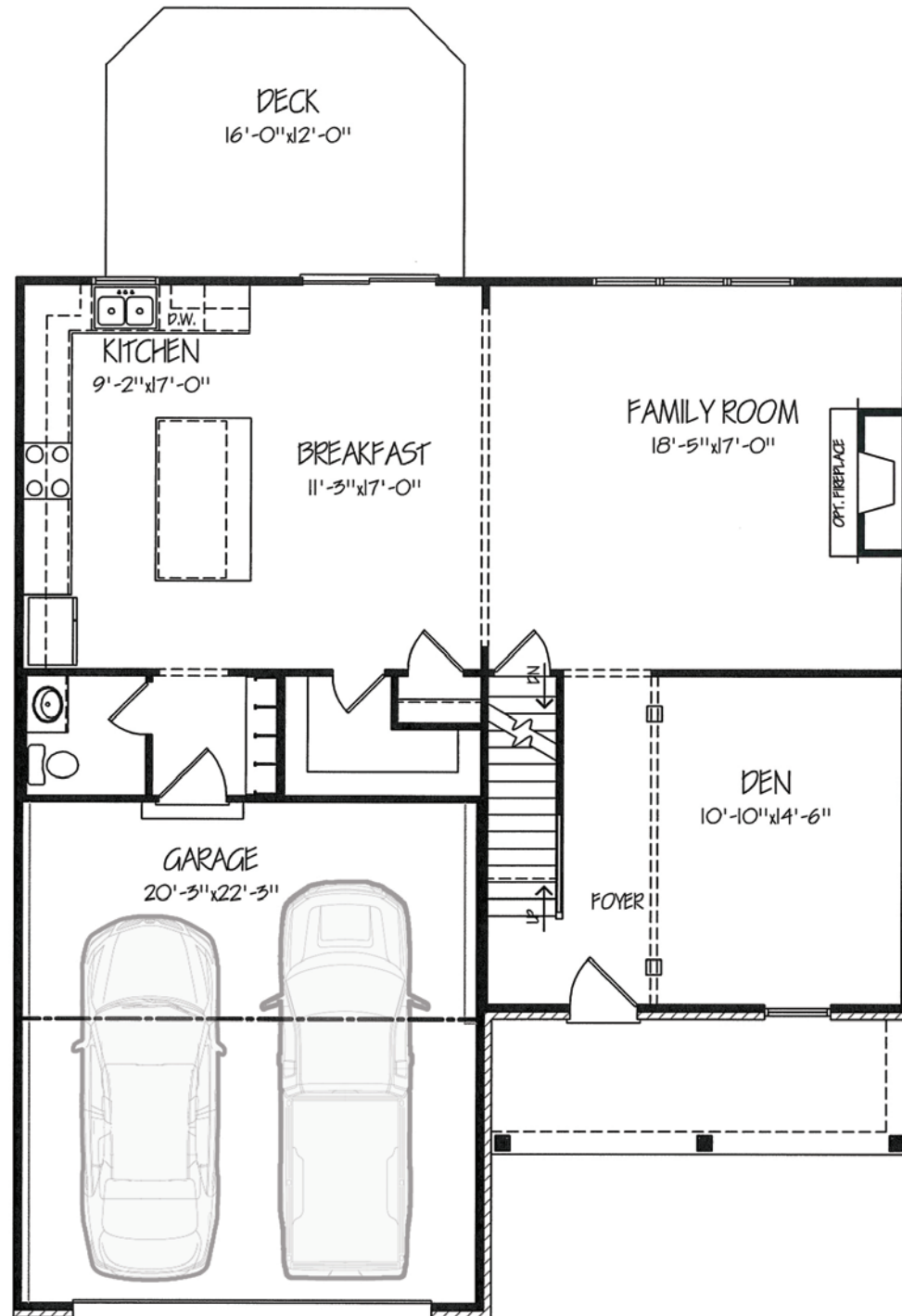
The Saratoga features a charming front porch, perfect for relaxing and watching the world go by. The foyer opens to a spacious office/den or possible formal dining area. The combined great room, breakfast area, and lovely kitchen are perfect for gatherings with family and friends. The kitchen features an oversized island and an abundance of storage. Complementing the first level is a powder room and mud room with seating. The second level offers three bedrooms, a considerable-sized bath with linen closet, and a lovely master suite with adjoining bath and large walk-in closet. A second floor laundry room adds to the convenience. The lower level offers the option of finishing additional space.

**859.341.0050**

4 Bedrooms • 2 1/2 Baths

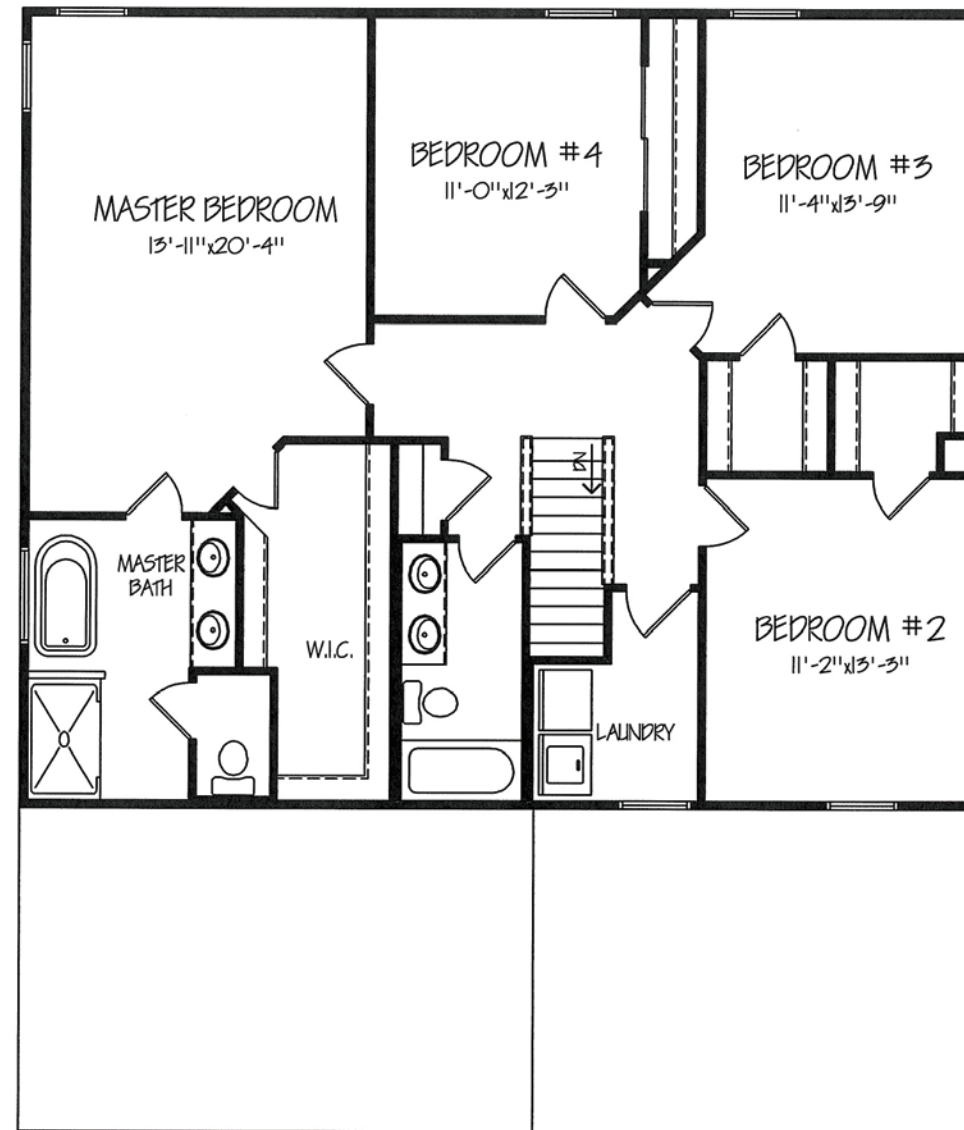
2,440 Square Feet

First Floor ..... 1,120 sf  
Second Floor ..... 1,320 sf



FIRST FLOOR

This drawing is for illustration only. The builder reserves the right to revise designs and specifications.



SECOND FLOOR

